

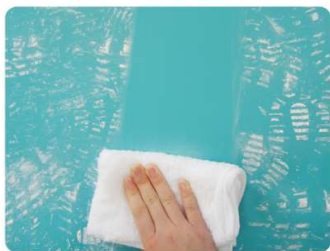
Japan Antibacterial Step Mat

Contains antibacterial, antifungal and antiviral agents!
Removal rate of 90% or more that overwhelms the conventional flip type !
Wash with water and use repeatedly for 2 to 3 years !



粘着力試験結果	洗浄回数				
	1回	25回	50回	75回	100回
粘着力	0.48N	0.68N	0.68N	0.65N	0.67N

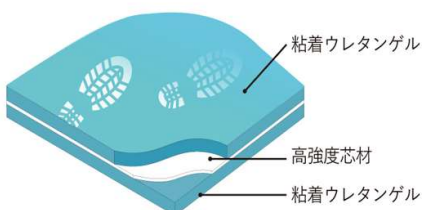
* The first adhesive strength is weak because the release agent attached to the protective sheet is attached. Once washed, it will come off and normal adhesion will develop.



除去率試験結果	洗浄回数				
	1回	25回	50回	75回	100回
除去率	99.8%	99.8%	99.8%	99.6%	99.8%

Even after washing 100 times and using it repeatedly, the adhesive strength / removal rate keeps 98% or more of the initial physical properties!

製品構造 (製品の両面に保護用のフィルムがついています)



Step mat 3 mm type

Product number	Thickness	color	Size (mm)
MAT3-4590	3 mm	Blue green	895 x 450
MAT3-0906			900 x 600
MAT3-1209			1200 x 900

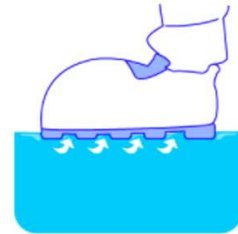


Step mat 6 mm type

Product number	Thickness	color	Size (mm)
MAT6-0906	6 mm	Blue green	900 x 600
MAT6-1209			1200 x 900

1. Removes 99.9% of dirt on the sole

The most easily mixed foreign substances are hair, skin fragments, and lint from clothing from employees. In the conventional flipping type with a thin adhesive layer, large dust may interfere and small dust may not be able to contact the adhesive layer and may not be removed. On the other hand, "Step Mat" is a thick and soft material that fits well to the unevenness of the sole, and removes dirt of 100 μm to 0.2 μm invisible size.



Ⓢ ATP (+ AMP) wiping test result

After walking indoors for 1 minute, walk 3 steps on the mat. After that, the removal rate of dirt remaining on the sole was measured.

① Walk indoors for 1 minute.

② After walking, walk 3 steps on the mat.

③ Collect the dust remaining on the soles of the shoes.

④ Put it in the machine and measure it.
(Using Kikkoman Biochemifa Lumitester)

test results

めくるタイプの粘着マット	ステップマット 3mm厚
67% <small>※他社製、抗菌タイプを使用</small>	99.9%

2. Contains antifungal and antibacterial agents

By blending an antifungal and antibacterial agent with the urethane gel that is the material, it has the effect of preventing the growth of mold and bacteria. It is widely used in food factories and pharmaceutical manufacturing factories.



3. No running cost by wiping with water

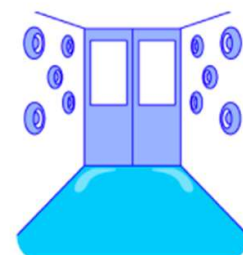
If the adhesive strength is reduced due to dirt, wipe the surface of the mat with water to remove the dirt, restore the adhesive strength, and use it repeatedly. You can also remove dirt more easily by using a special detergent.



4. Supports floor paving

Changing rooms, air showers, and front rooms of clean rooms are important for cleaning measures.

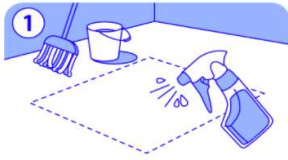
By laying a step mat in the area, dust that has fallen from hair and clothing is adsorbed. Prevents contaminants from entering critical areas.



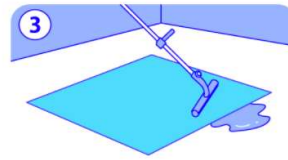
How to install the mat:

* Please check before installing the mat

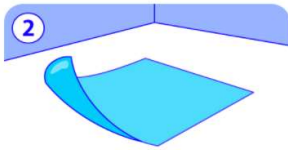
- The step mat is a mat that adsorbs fine dust. Installation in a place with a lot of large dust or hard and sharp dust may damage the mat and is not suitable for use. Please install it on a flat floor such as a painted floor.
- The mat may become slippery in places with a lot of water and oil. Please use in a dry place.
- The floor material may come off depending on the installation location. When removing the mat, slowly peel it off from the edge.



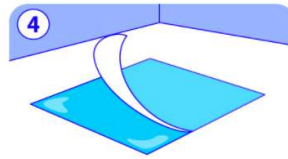
1 Clean the floor on which the mat will be installed and moisten it with a spray bottle.



3 Push out water or air with a presser roller or the like.



2 Peel off the film on the floor and place the mat.



4 Wipe off the water and peel off the film on the surface. You can use it when the mat / floor is dry.

[Estimated drying of the mat: overnight (10 to 12 hours)]

How to use the mat:

* Precautions when using the mat

- Please step on the mat with 3 steps as a guide. Lightweight carts and trolleys can also be passed through, but the mat may be damaged if the trolley stays on the mat.
- The usable period is 2 to 3 years.
- If you pass through the edge of the mat, it may stretch or tear, so please pass through the center of the mat.
- If water gets under the mat, the mat itself may slip. Try to keep it dry.

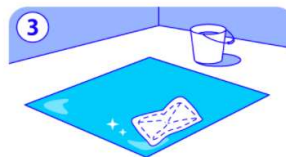
How to clean the mat:

* Please check before cleaning the mat

- If the dirt is left unattended, it will be difficult to remove it even if it is wiped. Please clean it regularly.
- Do not wipe with a dry cloth as it will damage the mat.
- Do not use cleansers containing abrasives, bleach, or hard brushes as they will damage the mat.



1 Wet the mat surface thoroughly with water or a special detergent.



3 Wipe off the remaining water with a rag that has been wrung out tightly.



2 Wipe with a damp rag or mop to collect dirt.



4 Lift the mat and wipe the back of the mat and the floor.